

### Special points of interest:

- **Successful Fundraiser Dinner!**
- **POULSBO BOAT**
- **Historical Tidbits...did you know...?**
- **Membership news**
- **Poulsbo is becoming a tourist destination around the country!**

### Inside this issue:

- Message from the Board President **1**
- Restoration of a Poulsbo Boat **1**
- Museum News **2**
- A Big Welcome **2**
- Walk a Block or Two & Got a Minute? **3**
- Thank you's **4**
- Membership Renewal Forms **4**

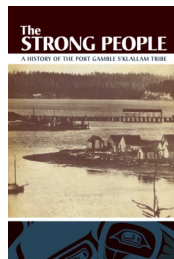
## Message from the Board President

Our 2013 Fundraiser Dinner was a great success. Thanks to all who donated to the auction, dessert dash and raffle. We raised over \$15,000 (compared to \$11,000 last year), had some 75 auction items, a raffle item, and over 20 donated desserts. The raise the paddle activity was again very successful. Many folks have told me the dinner, prepared by our partner, Sons of Norway, was the best codfish they had tasted! Todd Tidball did a wonderful job as auctioneer, in his first time ever! The discussion of past codfish derbies and dinners was popular enough that the April 9 morning meeting continued the storytelling.

Thanks to all who volunteered to help make this a successful event. Special mention to our Auction Committee who led the effort, including Lyn Playle, Judy Driscoll, DJ Bruce, David Shields, Jerry and Sharon Reitan, Wayne Paulson, Grant Alexander, Ted Portmann, Mike Ryan, Hildur Gleason, Mickey Albanese, Jim Shields and PK Maclean.

On Saturday, May 4, 7:00 PM we had a

presentation on the History of the Port Gamble S'Kallam Tribe. Kelly Sullivan, Tribal Executive Director of Services, Ted George, Tribal Elder, and Ron Hirschi, former Tribal Biologist all spoke about the history and activities of the Tribe, based on the new tribal history book "The Strong People." This was a wonderful opportunity for us to learn more about our former classmates, friends and neighbors, their history and culture.



**"The Strong People" a history of the Port Gamble, S'Klallam Tribe.**

Also, on Friday, May 3 the first of four Spring and eight Fall visits occurred, conducted by American Cruise Lines. The 100-passenger capacity American Spirit dropped anchor south of the Liberty Bay Marina and were lightered to Oyster Plant Park. They were bussed into downtown Poulsbo for a couple hours, then departed the

shore by 12:00 PM. PHS was present to conduct a downtown historical tour for seventeen visitors.

Your President, Dale Rudolph

## POULSBO BOAT

The Poulsbo Historical Society is in the process of restoring an original, 1946 Poulsbo boat. This is the Organization's second restoration project, the first being a 1920s Codfish Dory, which is on permanent display in the 2nd floor lobby of Poulsbo City Hall, located at 200 Moe Street.

The Poulsbo boat is 16 feet long, cedar plank on rib construction, powered by a one-cylinder inboard motor and was built by Ronald Young in the basement of the Young's Block building on Poulsbo's Front Street. It is one of 750 such boats built at that site. Our boat is currently being

## Poulsbo Boat Continued....

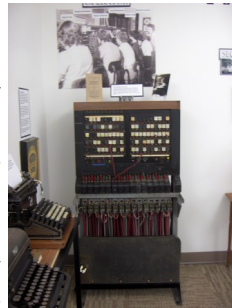


stripped of all paint inside and out in preparation for moving to the Northwest School of Wooden Boat Building in Port Hadlock. There it will be a summer class project undergoing replacement of several planks and numerous ribs. For more information about the boat, or how you might participate in the project, contact Dave Shields at 260-850-2389 or Jerry Reitan at 360-779-3374.

## New Exhibit

### WOMEN AT WORK

If you haven't seen it yet, come see the new exhibit at the Heritage Museum. **WOMEN AT WORK** explores the diverse roles women have played in Poulsbo's workforce. As part of the exhibit, two artifacts have been installed in the museum, that will probably remain on permanent display. One is a telephone switchboard—and yes, you can plug in the connectors, but no long distance calls, please. The second is a Bergman loom built in Poulsbo by John Bergman at the Yarn Barn. We hope to have it warped soon so visitors can try their hand at weaving.



## A BIG WELCOME :

WELCOME to a new greeter and archive volunteer, Pam Grossman. Pam is a retired history professor and has recently volunteered at the Keyport Naval Museum. She is presently learning our Past Perfect Museum program and is using it to help catalog and index our collection...an on-going kind of job that makes all our research easier. Welcome aboard, Pam!

THANK YOU to ALL of our  
Wonderful Volunteers!

## FROM THE ARCHIVES

Research is a large part of our work at the museum. This year we have logged over 17 research requests. The range can be anything from locating great grandpa's barn to requesting a list of former Poulsbo attorneys. Some of these requests lead to fascinating stories. As happened last week when a drop-in visitor set us off on the trail of the Gustav Mattila family of Pearson. A search of the 1909 and 1928 plat maps turned nothing up in Pearson. However, we remembered that the Mattila name was connected with a photography studio on the 1910 surveyor's map of downtown Poulsbo. It was a small building standing just north of the Liberty Bay Bank building (now Gifts of Promise). So we turned to our Kitsap County Herald database searching the Mattila name. The drama that unfolded about the Mattila family underscores how precarious life could be in the early 1900s. Here is their story:

Gustaf Adolph Mattila was born in 1860 in Finland and immigrated to Minnesota in 1888. There he met his future wife, Sophia Kemp, also of Finland, who emigrated in 1891. They married shortly after her arrival, opened a "confectionery" in Ely, MN and began raising a family of six children; Emil, Olga, Sylvia, Tygne, Katri, and an unnamed child who died in Minnesota.

By 1905 the Mattilas were farming in Pearson at the base of Pearson Point. This land was later owned by the Paul family. Gustaf, (a.k.a. John), opened a photography studio at Pearson in 1906. Perhaps some of our early Pearson photos were taken by him. "Remember him when you want photographs" the Herald reminded its readers.

Six months later tragedy struck the Mattila family. Fourteen year old Emil died a painful death of lock jaw when he accidentally shot his hand with a revolver. Blood poisoning was common before antibiotics were known. The Baptist church at Pearson was "crowded with relatives and friends of the deceased. Great quantities of beautiful flowers testified to the high esteem in which Emil was held. School closed to allow the children to attend in a body to pay their respects to a beloved friend and schoolmate." [KCH]

A year later misfortune again struck. The Mattila family had moved to the top of Lincoln Hill near the Sommerseths and Foldviks. In October of 1907 Mr. Mattila was driving to Poulsbo with several crates of chickens loaded on his wagon. "His horse shied and became unmanageable. It came running down the hill from the MVA hall, straight out onto the wharf and off the side of the wharf into the water. Before anything could be done for them the horse and most of the chickens drowned. When Mr. Mattila saw that he could not gain control of the horse he let it go, and saved himself.

“While Mr. Mattila sustains quite a loss in the drowning of a good horse and many chickens, he is to be congratulated in that he escaped without personal injury,” the Herald intoned.

Seven months later in 1908 this sad article ran in the Herald: “A little daughter of Mr. Mattila who lives near the Lincoln school house was burned so badly Monday, that she died a few hours after the accident occurred. The child had been playing with some matches

which she lighted and her clothes caught fire and every stitch on her body was burned. The doctor couldn’t find a spot that the fire had not scorched. The child was alone when the accident happened.” Eight year old Katri is buried in First Lutheran’s cemetery. The Matilla family returned to the Pearson area a short time later.

In 1910 Mr. Mattila announced, “I have started a photograph gallery in the building next to the Liberty Bay Bank and will be in shape to turn out first

class work. See me when you want your pictures taken. J.A. Mattila.”

By 1910 the Mattila family had added four more children to their ranks, Reino, William, George, and Lauri. They often appeared in the rolls for perfect attendance at the Pearson School.

In 1914 tragedy struck again in April when Gustaf Mattila died. His death must have had a profound effect on Sophia Mattila. She was now the head of the family with seven children

Olga married in 1916 and moved to Seattle. Sophia supported the rest of the family until 1918 when she succumbed to a nervous breakdown in the spring of 1918 and died sixteen months later. Olga took the younger children to live with her in Seattle.



Above: The Liberty Block building under construction in 1915.

## WALK-A-BLOCK (OR TWO)

Our walking tour season has opened in a big way. The first week in May we walked a senior English class from North Kitsap High School around town. They were studying Greek and Norse mythology and were assigned the task of writing a Poulsbo “myth” from the knowledge they gained about early Poulsbo.

That walk was a good refresher course for our tour guides as

they prepared for the addition of American Cruise Lines to the regular tour schedule. The first cruise line tour was Friday, May 3 when we walked seventeen tourists from points east (Maryland, Nebraska, Iowa, Texas, Florida, Montana) and a few points south—Oregon and California. Last week we had a couple from New Zealand!

A great time was had by all. The cruise tours will take place

every Friday morning in May and again in September and October. But you don’t have to wait for a scheduled tour. Gather a group of four or more and give us a call at the museum. With a day’s notice we can set you up for a tour. It’s a fun way to introduce visiting family and friends to our community,



spend a full 3 hours? Let us know and maybe we can split your shift with another person...we can be creative! Give us a call at 440-7354, or better yet, drop by the museum and we’ll see what will fit your schedule and ours!

## GOT A FEW MINUTES?

Every historical society needs volunteers in every size, age, and condition! Even if you don’t have hours to spend, taking on any of a myriad of projects, small or large, can be a gigantic help. Sad to say, our oldest greeter at both the Martinson Cabin and the Heritage Museum, Cora Caldart, will no longer be able to help us. We

are certainly missing her gentle smile and soft-spoken ways at the museum! Our best to you, Cora, and thank you for the time you so graciously gave us. Now we need to fill the big shoes Cora has vacated! If you can spend 3 hours a month greeting guests at the cabin, or in the museum, we’d certainly like to hear from you! Can’t

## MEMBERSHIP

If you have paid your annual membership dues in the last three months, look for your membership card in this mailing. If you don’t see it...check your wallet to see if you got it in the last newsletter. If you still don’t see it, contact us. We can check to see if your dues are current. We rely heavily on receipts from membership dues to pay the monthly bills!



# THANK YOU!

High on the wish list for our archives was a flat file for storing maps, oversized photographs and posters. The good fairy granted our wish in April in the form of a 14-drawer flat file given to us by ADA Associates when **Herb and Elda Armstrong** retired. There were smiles aplenty around the library as we unrolled long-forgotten documents and inventoried them into the new file. Thank you Herb and Elda for thinking of us! The Armstrongs also added to our collection with many old surveyors' instruments and tools as well as some city maps that will be invaluable in locating residences of families in the 1930s. Working in the museum can be quite an education. We're presently learning about drafting and surveying!

A huge THANK YOU to the many volunteers who stepped in to set-up, run, and take down our annual Codfish Dinner and Auction. We'd especially like to thank **Todd Tidball**, who stepped up to the plate (or was it the mic?) a few days before the auction and offered to be our auctioneer when two other auctioneers cancelled. Todd did a wonderful job and was entertaining as well as efficient!

Another proficient volunteer was **Margene Smaaladen**, who, when asked her for input on the dessert auction, jumped in with arms loaded with decorations and set up the attractive dessert display! Margene had us salivating over the luscious desserts provided by our donors.

**Mickey Albanese** headed our decoration committee for the second year in a row. Her attractive and clever decorations again added to the fun of the evening. She and her crew are to be commended for their can-do attitude.

Thank you, **Kathy Raiment**, for introducing us to the Auction Tracker computer program and training our museum director, Lyn, in its use. Kathy has handled the Rotary Auction proficiently for several years. As we become better acquainted with what the program has to offer, we'll be more efficient at handling the check-in and check-out processes. Things just keep getting better and better!

Finally, a **HUGE** thank you to all the businesses and individuals who graciously donated wonderful baskets, services, articles, trips, and tours to be auctioned. Without your donations there would be no auction!

**TIME & TIDES**

Poulsbo Historical Society  
Museum  
PO Box 844  
200 Moe St.  
Poulsbo, WA. 98370

Phone: 360-440-7354  
E-mail:  
info@poulsbohistory.org  
www.poulsbohistory.org

If you are new, or need to renew, please fill in the renewal form and mail with your check.

**Membership Categories & Rates (Please Mark)**

<b>Student</b>	<b>\$10.00</b>	_____	<b>Corp. (over 20 employees)</b>	<b>\$100.00</b>	_____
<b>Individual</b>	<b>\$20.00</b>	_____	<b>Patron</b>	<b>\$100.00</b>	_____
<b>Family</b>	<b>\$30.00</b>	_____	<b>Sustaining</b>	<b>\$500.00</b>	_____
<b>Business (up to 20 employees)</b>	<b>\$50.00</b>	_____			

All memberships run from January 1 to December 31 of the calendar year.

**Member/Contributor/Contact Information**

Name (s) \_\_\_\_\_

Business/Corp Name & Title \_\_\_\_\_

Mailing Address \_\_\_\_\_

City, State & Zip \_\_\_\_\_

E-mail Address (not shared) \_\_\_\_\_

**This Membership is a :**

**Membership Renewal** \_\_\_\_\_

**New Membership** \_\_\_\_\_

**Gift Membership** \_\_\_\_\_